

Technical data sheet

Duct connection bracket (conductive)

Item no. 7400980



Connection brackets for the conductive connection between screed-covered duct and underfloor boxes UZD and UGD.

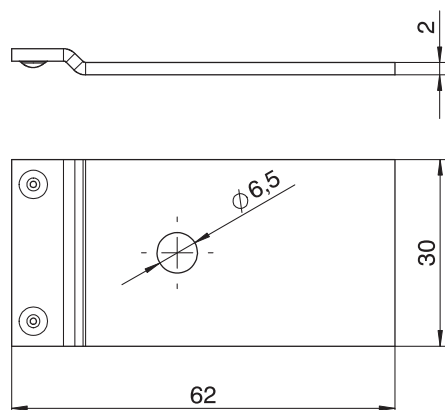


St	Steel
FS	Strip galvanised

Master data

Item no.	7400980
Type	VW E
Description 1	Connection bracket
Description 2	conductive
Material	Steel
Material symbol	St
Surface	Strip galvanised
Surface to DIN	DIN EN 10346
Surface symbol	FS
Smallest sales unit (VG)	20 Piece
Weight	2,80 kg/100 pc.

Technical data



Mounting opening cover	<input type="checkbox"/>
Version	Other
Plate thickness, cover	
Plate thickness, base	
Floor plate	<input type="checkbox"/>
Cover fastening, locking	<input type="checkbox"/>
Seal installation option	<input type="checkbox"/>
Application area	Screed-covered
Decouplable	<input type="checkbox"/>
Suitable for screed-covered underfloor ducts	<input checked="" type="checkbox"/>
Suitable for screed-flush closed underfloor ducts	<input type="checkbox"/>
Suitable for flushfloor, open underfloor duct	<input type="checkbox"/>
With connection opening	<input type="checkbox"/>
With equipotential bonding	<input checked="" type="checkbox"/>
With overhang	<input type="checkbox"/>
Removable cover	<input type="checkbox"/>